



ENDURO PRODUCTS

Technical Data Sheet

ENDURO-DEK

Decorative Coating for Pedestrian Decks

1. Description:

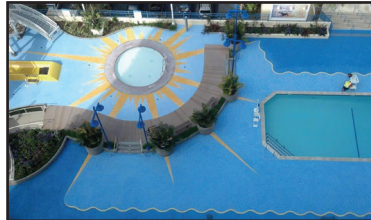
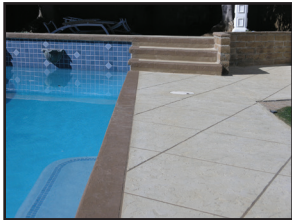
EP – ENDURO-DEK is a multi-layer cementitious/acrylic textured traffic coating system designed to beautify existing concrete surfaces such as pool decks, patios, entry ways and similar pedestrian walking surfaces.

2. Features:

- Economical
- Fast Drying
- Labor Saving
- User Friendly
- Zero VOC

3. Uses:

- Pool Decks
- Walkways
- Patios
- Courtyards



4. Color/Finish/Packaging:

EP – ENDURO-DEK Consists of Enduro-Dek Cement (EDC) in 46 lb. bags, Enduro-Dek Liquid Polymer (EDL) in 1 and 5 gallon containers and Enduro-Kote Pigmented Sealer (EKS) in 1 and 5 gallon containers. Optional products are Enduro Dek Clear Sealer (EDS) and EN-70 Epoxy Primer. Finish options include Knock-Down Splatter texture, broom finish and skip trowel. Colors can be selected from the Enduro-Kote Acrylic Color Chart and optional special colors can be made upon request. Minimum orders may apply for special colors.

5. Preparation:

Concrete shall be cured a minimum of 28 days and have a minimum surface profile CSP 3 or that of medium grit sand paper. Prepare surface by shot-blasting, water-blasting or mechanically grinding and insure that concrete surface is porous enough to readily absorb water. Repair all cracks by routing 1/4" deep by 1/4" wide and repairing with EN 72 Epoxy Paste. All expansion and control joints must be honored and not covered with the Enduro-Dek System. Expansion joints may be sealed with polyurethane sealant prior to the application of the final Enduro-Dek Color Coats.

6. Application:

Begin application of Enduro-Dek immediately after surface preparation has been completed. Priming- Apply a prime coat of Enduro-Kote EKL diluted with 4 parts water to 1 part EKL over all concrete surfaces. Immediately install the first coat of Enduro-Dek Cement at a rate of 150-200 SF per bag by trowel and allow to cure for 1 hour. Once the first coat has cured install Enduro-Dek Cement by trowel or from a texture gun to create the desired texture. Once the texture is complete and cured enough to walk on, scrape off loose materials and apply the Enduro-Kote EKS Pigmented Sealer at rate of 90 SF per gallon to complete the system.

7. Limitations:

Do not apply during rain or snow, or if precipitation is expected within 12 hours. Do not apply if temperature drops below 50 degrees F or rises above 95 degrees F during application. Do not apply solvent based coatings over this product. Not compatible with silicone, coal tar, polysulfide or plasticized PVC.

8. Cleaning Instructions:

Clean up tools and equipment with water before the materials harden.

9. Safety Health and Environmental Recommendations:

Provide proper ventilation. Avoid coating contact with skin and eyes. Use protective goggles and clothing. In case of eye contact, flood eyes with water and call a physician immediately. Wash hands thoroughly with soap and water after handling. Do not take internally. If ingested, call a physician immediately. Read the Material Safety Data Sheet prior to handling or application as supplied by Enduro Products in California: (714) 526-5898, Fax (714) 526-6511; email: info@endurokote.com.

10. Warranty:

Enduro Products warrants its EP – ENDURO-DEK system to be free of defects in materials, but makes no warranty as to appearance or color. Since methods of application and on-site conditions are beyond our control and can affect performance, Enduro Products makes no other warranty, expressed or implied, including warranties of merchantability and fitness for a particular purpose with respect for Enduro Products. Enduro Products' sole obligation shall be, at its option, to replace or to refund the purchase price of the quantity of EP – ENDURO-DEK proved to be defective and Enduro Products shall not be liable for any loss or damage.

PRODUCT SPECIFICATIONS

TEST	REFERENCE	RESULTS
Weatherometer Test	ASTM D 1499	No crazing, cracking, spalling or other degradation of surface Passed Bond Strength Test Did not exceed maximum Thickness allowed Unaffected by industrial detergent 20% solution, ammonia 5% solution Salt 20% solution, kerosene, Anti-freeze and paint thinner Superficially affected by chlorine 10% solution, Moderately affected By muriatic acid 10% solution No breakage, weight loss, cracking, Crazing or delamination Passed no cracking or splitting 5324 PSI.
Accelerated Aging Test	ASTM D 756	
Abrasion Resistance Test	ASTM D 1242	
Chemical Resistance Test	ASTM D 2299	
Freeze Thaw Test	ASTM C 67	
Impact Test	ASTM D 3746	
Compressive Strength Test	ASTM C 109	



Corporate Office: 1133 N. Patt Street, Anaheim, California 92801 • Phone: (714) 526-5898 • Fax: (714) 526-6511
Florida Office: 8050 N.W. 66th Street, Miami, Florida 33166 • (941) 378-9794 • Fax: (941) 378-9438
Toll Free: (877) 809-0781 • Email: info@endurokote.com • Website: www.endurokote.com

REVISED AUGUST 2018

Safety Data Sheet

Section 1: Identification of the Product/Company

Product Identifier:

Product Name: ENDURO-KOTE EKC Cementitious Mix ----- EKC Gray or White
ENDURO-DEK Colored Cementitious Mix ----- Enduro-Dek

Product Code:

Relevant identified uses of the substance or mixture

Recommended use:

For professional use in the construction industry

Uses advised against:

None identified

Details of the supplier of the safety data sheet

Manufacturer:

Enduro Products
1133 N. Pratt Street
Anaheim, CA 92801
United States
www.endurokote.com

Telephone (General)

(714) 526-5898

Emergency telephone number

Manufacturer: (714) 526-5898 USA

Section 2: Hazards Identification

Classification of the substance or mixture

GHS-US classification

Skin Corrosion/Irritation:	Category 2, H315
Eye Damage:	Category 1, H318
Skin Sensitization:	Category 1, H317
Carcinogenicity:	Category 1A, H350
Specific target organ systemic toxicity (single exposure):	Category 3, H335
Specific target organ systemic toxicity (repeated exposure):	Category 1, H372

Label elements

GHS-US labeling

Safety Data Sheet

The substance is classified and labeled according to the Globally Harmonized System (GHS).

Hazard Pictograms (GHS-US)



GHS05



GHS06



GHS08

Signal words (GHS-US):

Danger

Hazards statements (GHS-US):

H315 Causes skin irritation
H317 May cause an allergic skin reaction
H318 Causes serious eye damage
H335 May cause respiratory irritation
H350 May cause cancer
H372 Cause damage to organs through prolonged or repeated use

Precautionary statements (GHS-US)

Prevention:

P102 Keep out of reach of children
P280 Wear protective gloves, clothing, and eye/face protection

Response:

P305 + P351 + P338 + P310: If in eyes: Rinse cautiously with water for several minutes. Remove contact lenses if present and easy to do. Continue rinsing. Immediately call a Poison Center or doctor/physician.
P302 + P352 + P333 + P313: Wash with plenty soap and water. If skin irritation or rash occurs: Get medical advice/attention
P261 + P304 + P340 + P312: Avoid breathing dust/fumes, gas, mist, vapors, spray. IF INHALED: Remove victim to fresh air and keep at rest in a position comfortable for breathing. Call a poison center or doctor/physician

Safety Data Sheet

Storage:

P403+P233 store in a well-ventilated place. Keep container tightly closed

P403 + P235 Store in a well-ventilated place. Keep cool

P405 Store locked up

Disposal:

P501 Dispose of contents and containers in accordance with local, regional and international regulations

Precautionary statements are listed according to the United Nations Globally Harmonized System of Classification and Labeling of Chemicals (GHS)-Annex III

Other hazards

No other information available

Unknown acute toxicity (GHS-US)

No data available

Section 3: Composition/information on ingredients

Substances

Name	Product Identifier	% by weight	GHS-US classification
Ordinary Portland Cement	CAS # 65997-15-1	5-30	Skin irritant 2, H315 STOT SE 3, H335 Eye irritant, H318 Skin sensitization 1, H317
Sand	CAS # 14808-60-7	55-85	STOT SE 3, H335 STOT RE 1, H372 Carc. 1A, H350

Amounts specified are typical and do not represent a specification. Any other ingredients are either proprietary, non-hazardous or present in amounts below the reportable limits.

Section 4: First aid measures

Description of necessary first aid measures

First-aid measures general:

Safety Data Sheet

Symptoms of poisoning may even occur after several hours; therefore medical observation for at least 48 hours after the accident.

First-aid measures after inhalation:

If affected, remove to fresh air. Dust in throat or nasal passage should clear spontaneously. Get medical attention if irritation persists or any discomfort, coughing or other symptoms continue or do not subside.

First-aid measures after skin contact:

Immediately remove contaminated clothing and shoes. Launder clothing before reuse. Seek medical attention if symptoms of irritation or burns occur.

First-aid measures after eye contact:

Do not rub eyes as additional corneal damage will continue to occur. Remove any contact lenses and open eyelids widely to flush immediately by thoroughly rinsing with plenty of clean water for at least 45 minutes to remove all particles. If possible use isotonic water (0.9% Sodium Chloride). Contact an eye specialist immediately.

First-aid measures after ingestion:

Do not induce vomiting. Call a physician or poison control center immediately for further instructions. Never give anything by mouth to an unconscious or convulsing person. If person is conscious, rinse out the mouth with water and give plenty of water to drink. Get medical attention immediately.

Most important and effects, both acute and delayed

Symptoms:

Irritation may occur. Pre-existing skin problems may be aggravated by prolonged or repeated contact.

Indication of any immediate medical attention and special treatment needed

Treat symptomatically

Section 5: Firefighting measures

Extinguishing media

Suitable extinguishing media:

All type of extinguishing media are suitable

Unsuitable extinguishing media:

None known

Special hazards arising from the substance or mixture

Fire hazard:

Poses no fire related hazard. Non-combustible material

Explosion hazard:

Non-explosive

Reactivity:

Safety Data Sheet

Will not facilitate or support combustion of other materials.

Advice for firefighters

Firefighting instructions:

Not required

Protection during firefighting:

No need for specialist fire-fighting equipment.

Additional information

Section 6: Accidental release measures

Personal precautions, protective equipment and emergency procedures

General measures:

Wear protective equipment as described under Section 8 and follow the advice of safe handling and use given under Section 7. Emergency procedures are not required.

For non-emergency personnel

Protective equipment:

Wear chemical resistance (impervious) gloves

Emergency procedures:

None required

For emergency responders

Protective equipment:

Not Applicable

Emergency procedures:

Not Applicable

Environmental precautions

Do not allow to enter drains, sewers or watercourses.

Methods and material for containment and cleaning up

For containment:

Recover spillage in a dry state if possible.

Methods for cleaning up:

Use dry cleanup methods that do not promote airborne dispersions e.g.

Vacuum cleaner (Industrial portable units, equipped with high efficiency particulate filters (HEPA filter) or equivalent technique).

- Wipe up the dust by mopping, wet brushing or water sprays or hoses (fine mist to avoid the dust becoming airborne) and remove slurry. If not possible, remove by slurring with water (see Wet product).

When wet cleaning or vacuum cleaning is not possible and only dry cleaning with brushes can be done, ensure that the workers wear appropriate personal protective equipment and prevent dust from spreading.

Safety Data Sheet

Avoid inhalation of product and contact with skin. Place spilled materials into a container. Solidify before disposal as described under Heading 13.

Wet product: Clean up wet product and place in a container. Allow material to dry and solidify before disposal as described under Heading 13.

Reference to other sections

See Section 7 for information on safe handling

See Section 8 for information on personal protective equipment

See Section 13 for disposal information

Section 7: Handling and storage

Do not handle or store near food and beverages or smoking material

Precautions for safe handling

Precautions for safe handling:

Do not ingest, avoid contact with skin and avoid contact with eyes. Avoid generating dust.

Hygiene measures:

General occupational hygiene measures are required to ensure safe handling of the product. These measures involve good personal and house-keeping practices. Wash hands after use if contaminated. Avoid wearing contaminated clothing. In dusty environment, wear dust mask, protective goggles and gloves.

Conditions for safe storage, including any incompatibilities

Storage conditions:

Bulk material should be stored in silos that are waterproof. Packed products should be stored in unopened bags clear of the ground in cool, dry conditions and protected from excessive draught, humid conditions and excesses of temperatures to avoid degradation of quality.

Incompatible products:

See section 10

Incompatible materials:

See section 10

Storage area:

The product should be stored in a cool, dry and well-ventilated area, at ambient temperature directly out of the sunlight.

Special rules on packaging:

Bags should be stacked in a stable manner. Do not use Aluminum containers due to incompatibility of the materials.

Specific end use(s)

Section 8: Exposure controls/personal protection

Safety Data Sheet

Control parameters

Occupational exposure limits:

Chemical Name	CAS #	EXPOSURE LIMITS
Ordinary Portland Cement	65997-15-1	OSHA PEL 5mg/m ³ ACGIH TLV 1mg/m ³
Sand	14808-60-7	OSHA PEL .05 mg/m ³ ACGIH TLV .025 mg/m ³

Exposure controls

Appropriate engineering controls:

Use only with adequate ventilation. If the operation generates dust, use process enclosures, local exhaust ventilation or other engineering controls to keep worker exposure of airborne particulates below any recommended or statutory limits

Personal protective equipment:

Wear fire-proof clothing, protective goggles and gloves. Wear respiratory protection in a poor ventilated environment.

Hand protection:

Wear impervious, waterproof, abrasion and alkali resistant gloves. Do not rely on barrier cream versus abrasion resistant gloves. Do not allow product inside the gloves.

Eye protection:

Chemical goggles or safety glasses with side-shields should be worn especially in a dust environment. Use contact lenses solely is not recommended.

Skin and body protection:

Wear impervious, waterproof, abrasion and alkali resistant boots and protective long sleeved and long legged clothing to protect the skin from contact with this product. Remove any clothing that becomes saturated with this product and thoroughly wash the exposed areas immediately.

Respiratory protection:

Safety Data Sheet

If a risk assessment indicates the necessity for respiratory protection, use a properly fitted particulate filter respirator. Selection of respirator will be based upon the hazards of the product, the known or anticipated exposure levels and the assigned protection factor of the respirator.

Thermal hazard protection:

Wear suitable protection clothing

Other information:

Clean water should always be available for skin and emergency (eye) washing. Periodically wash any area contacted with the product using a pH neutral soap and uncontaminated water. When using, do not eat, drink or smoke

Section 9: Physical and chemical properties

Information on basic physical and chemical properties

Physical state:	Solid
Appearance:	Powdery material
Color:	Gray, White, Mushroom, Saltillo, Sauterne, Parchment, Cinnamon, Limestone, Sand Beige, Copper Beech and Slate Gray
Odor:	Odorless
Odor threshold:	Not available
pH:	12-13
Relative evaporation rate (butyl acetate=1):	Not Applicable
Melting point:	Not available
Boiling point:	Not determined
Auto-ignition temperature:	Not available
Decomposition temperature:	Not Determined
Flammability (solid, gas):	Not Applicable
Vapor pressure:	Not Determined
Flash Point:	Not Applicable
Flash Point Method:	Not Applicable
Relative vapor density @ 20 ° C:	0.0
Relative density:	2.5
Density:	20.8 lbs / gal
Solubility:	0.1-1%
Log Pow:	Not available
Log Kow:	Not available
Viscosity, kinematic:	Not available
Viscosity, dynamic:	Not available

Safety Data Sheet

Explosive properties:
Oxidizing properties:
Explosive limits:

Non-explosive
None known
Not Applicable

Other information:

No further relevant information available

Section 10: Stability and reactivity

Reactivity

No data available

Chemical Stability

Product is stable under normal storage conditions

Conditions to Avoid

Avoid humid conditions during storage as this might cause lumps and loss of product quality

Incompatible Materials

Avoid strong acids, bases and strong oxidizers and avoid the uncontrolled use of Aluminum powder in the wet product as Hydrogen will be produced.

Hazardous Decomposition Products

Product will not decompose into other hazardous by-products and will not polymerize

Section 11: Toxicological information

Information on toxicological effects

TOXICITY MEASURES:

Acute toxicity:

Based upon available data, the classification criteria are not met

Skin corrosion/irritation: (Category 2)

When in contact with wet skin may cause thickening, cracking or fissuring on the skin. Prolonged contact in addition with abrasion may cause severe burns.

Serious eye damage/irritation: (Category 1)

Direct contact may cause corneal damage by mechanical stress, immediate or delayed irritation or inflammation. Direct contact by large amounts may cause effects ranging from moderate irritation to chemical burns and blindness.

Respiratory or skin sensitization: (Category 1)

Some individuals may develop eczema upon exposure by the high pH which induces irritant contact dermatitis after prolonged contact. The response may appear in a variety of forms ranging from a mild rash to severe dermatitis. There is no indication of sensitization to the respiratory system.

Germ cell mutagenicity:

This product is not classified as a mutagen

Chronic Health Effects:

Safety Data Sheet

Respirable crystalline silica in the form of quartz or cristobalite from occupational sources is listed by the International Agency for Research on Cancer (IARC) and National Toxicology Program (NTP) as a lung carcinogen. Prolonged exposure to respirable crystalline silica has been known to cause silicosis, a lung disease, which may be disabling. While there may be a factor of individual susceptibility to a given exposure to respirable silica dust, the risk of contracting silicosis and the severity of the disease is clearly related to the amount of dust exposure and the length of time (usually years) of exposure.

Carcinogenicity:

The product contains an ingredient that may cause cancer.

Reproductive toxicity:

Developmental: Based on available data, the criteria are not met

Teratogenicity: Not hazardous by WHMIS/OSHA criteria

Embryotoxicity: Not hazardous by WHMIS/OSHA criteria

Fertility: Based on available data, the criteria are not met

Specific target organ toxicity (single exposure):

May cause respiratory irritation

Specific target organ toxicity (repeated exposure):

May cause damage to organs through prolonged or repeated exposure

Aspiration hazard:

Based on available data, the criteria are not met

Other information:

Not available

Section 12: Ecological information

All work practices must be aimed at eliminating environmental contamination.

Toxicity

The product is not expected to be hazardous to the environment, but because of its high alkalinity the product may be toxic to aquatic life under certain conditions.

Persistence and degradability

Not relevant as the components are inorganic and after hardening presents no toxicity risks.

Mobility

Products is not volatile but may become airborne during handling operation.

Other adverse effects

Not determined for this product

Section 13: Disposal considerations

Safety Data Sheet

Waste treatment methods

Regional legislation (waste):

Dispose of waste and unused contents in accordance with national and local regulations.

Waste disposal recommendations:

Ensure the use of properly authorized waste management companies where appropriate or uncertain.

Section 14: Transport information

The product is not covered by the international regulation on the transport of dangerous goods (IMDG, IATA, ADR/RID) and therefore no classification is required.

Section 15: Regulatory information

U.S. Federal Regulations

U.S. OSHA Regulatory Status:

This material is classified as hazardous under OSHA regulations

U.S SARA Reporting Requirements:

The following components of this product are subject to reporting requirements of sections 302, 304 and 313 of Title III of the Superfund Amendments and Reauthorization Act.

CHEMICAL	SECTION 302 EHS (TPQ) (40 CFR 355, Appendix A)	SECTION 304 RQ (40 CFR Table 302.4)	SECTION 313 TRI (40 CFR 372.65)
Ordinary Portland Cement	No	No	No
Sand	No	No	No

A Section 311/312 (40 CFR 370) Hazard Categories:

ACUTE: Yes; CHRONIC: Yes; FIRE: No; REACTIVE: No; SUDDEN RELEASE: No

Toxic Substances Control Act (TSCA):

All components of this product are included on the TSCA inventory

U.S. CERCLA Reportable Quantity (RQ):

This product is not listed under CERCLA

U.S. Clean Air Act Threshold Quantity (TQ):

This product is not listed.

U.S. Clean Water Act Requirements:

This product is not listed

California Safe Drinking Water and Toxic Enforcement Act (Proposition 65):

This product contains crystalline silica, quartz and may also contain trace amounts of other chemicals known to the State of California to cause cancer, birth defects or other reproductive harm.

Canadian WHMIS Classification:

Safety Data Sheet

Canadian Environmental Protection Act (CEPA) Priorities Substances Lists:

European Inventory of Existing Chemicals (EINECS):

All of the components of this product are included on EINECS.

Section 16: Other information

Indication of changes:

Other information:

Full text of H phrases:

STOT SE 3	Specific Target Organ Toxicity-Single Exposure, Category 3, Narcosis
STOT RE 1	Specific Target Organ Toxicity-Repeated Exposure, Category 1



NFPA health hazard: 2-Moderately toxic or hazardous material which require additional PPE or equipment other than safety goggles and gloves.

NFPA fire hazard: 0-Material is not combustible

NFPA reactivity: 0-Normally stable, even under fire exposure conditions, and not reactive with water

Notice to Reader

The information provided herein is believed to be accurate at the time of preparation or prepared from sources deemed to be reliable, but it is the full responsibility of the user to investigate and comprehend other pertinent sources of information, to comply with all laws and procedures applicable to the safe handling and use of the product and to determine the suitability of the product for its intended use. Enduro Products **makes no warranty, expressed or implied, concerning the product or merchantability or fitness thereof for any purpose or concerning the accuracy of any information provided by Enduro Products**, except that the product shall conform to Enduro Products' specification.



ENDURO PRODUCTS

Providing Waterproofing Solutions Since 1983

Safety Data Sheet

Section 1: Identification of the Product/Company

Product Identifier:

Product Name: EKL Emulsion

Product Code:

Relevant identified uses of the substance or mixture

Recommended use:

For professional use in the construction industry

Uses advised against:

None identified

Details of the supplier of the safety data sheet

Manufacturer:

Enduro Products
1133 N. Pratt Street
Anaheim, CA 92801
United States
www.endurokote.com
(714) 526-5898

Telephone (General)

Emergency telephone number

Manufacturer: (714) 526-5898 USA

Section 2: Hazards Identification

Classification of the substance or mixture

GHS-US classification

No need for classification according to GHS criteria for this product

Label elements

GHS-US labeling

The product does not require a hazard warning label in accordance with GHS criteria.

Other hazards

No other information available



Safety Data Sheet

Unknown acute toxicity (GHS-US)

No data available

Section 3: Composition/information on ingredients

Substances

Name	Product Identifier	% by weight	GHS-US classification
Acrylic resin	Trade secret	20-60	

Amounts specified are typical and do not represent a specification. Any other ingredients are either proprietary, non-hazardous or present in amounts below the reportable limits.

Section 4: First aid measures

Description of necessary first aid measures

First-aid measures general:

Remove contaminated clothing

First-aid measures after inhalation:

If affected, remove to fresh air. Assist in breathing if necessary

First-aid measures after skin contact:

Immediately remove contaminated clothing and shoes. Launder clothing before reuse. Seek medical attention if symptoms of irritation or burns occur.

First-aid measures after eye contact:

Flush with copious amount of water for at least 15 minutes. If irritation develops, seek medical attention.

First-aid measures after ingestion:

Do not induce vomiting. Call a physician or poison control center immediately for further instructions. Never give anything by mouth to an unconscious or convulsing person. If person is conscious, rinse out the mouth with water and give plenty of water to drink. Get medical attention immediately.

Most important and effects, both acute and delayed

Symptoms:

None expected due to the non-classification of the product.

Indication of any immediate medical attention and special treatment needed



Safety Data Sheet

Treat symptomatically

Section 5: Firefighting measures

Extinguishing media

Suitable extinguishing media:

Water spray, foam, dry powder

Unsuitable extinguishing media:

None known

Special hazards arising from the substance or mixture

Fire hazard:

Poses no fire related hazard. No particular hazards known

Explosion hazard:

Non-explosive

Reactivity:

Will not facilitate or support combustion of other materials.

Advice for firefighters

Firefighting instructions:

Not required

Protection during firefighting:

Firefighters should be equipped with self-contained breathing apparatus and turn out gear.

Additional information

Section 6: Accidental release measures

Personal precautions, protective equipment and emergency procedures

General measures:

Wear protective equipment as described under Section 8 and follow the advice of safe handling and use given under Section 7. Emergency procedures are not required.

For non-emergency personnel

Protective equipment:

Wear chemical resistance (impervious) gloves

Emergency procedures:

High risk of slipping due to spillage/leakage of product

For emergency responders

Protective equipment:

Not Applicable



ENDURO PRODUCTS

Providing Waterproofing Solutions Since 1983

Safety Data Sheet

Emergency procedures:

Not Applicable

Environmental precautions

Do not allow to enter drains, sewers or watercourses.

Methods and material for containment and cleaning up

For small amounts: Pick up with suitable absorbent material (e.g. sand, sawdust, etc.). Dispose of absorbed material in accordance with regulations.

For large amounts: Pump off products

Reference to other sections

See Section 7 for information on safe handling

See Section 8 for information on personal protective equipment

See Section 13 for disposal information

Precautions for safe handling

Precautions for safe handling:

Handle in accordance with good industrial hygiene and safety practice. Ensure adequate ventilation.

Hygiene measures:

General occupational hygiene measures are required to ensure safe handling of the product. These measures involve good personal and house-keeping practices. Wash hands after use if contaminated. Avoid wearing contaminated clothing. In dusty environment, wear dust mask, protective goggles and gloves.

Conditions for safe storage, including any incompatibilities

Storage conditions:

Store protected against freezing

Incompatible products:

See section 10

Incompatible materials:

See section 10

Storage area:

The product should be stored in a cool, dry and well-ventilated area, at ambient temperature directly out of the sunlight.



Safety Data Sheet

Section 8: Exposure controls/personal protection

Control parameters

Occupational exposure limits:

No occupational exposure limits known

Exposure controls

Appropriate engineering controls:

Ensure adequate ventilation

Personal protective equipment:

Wear fire-proof clothing, protective goggles and gloves. Wear respiratory protection in a poor ventilated environment.

Hand protection:

Wear chemically resistant protective gloves

Eye protection:

Chemical goggles or safety glasses with side-shields should be worn especially in a splashing environment. Use contact lenses solely is not recommended.

Respiratory protection:

Wear respiratory protection if ventilation is inadequate.

Thermal hazard protection:

Wear suitable protection clothing

Other information:

Hands or face should be washed before breaks and at the end of and shift. Avoid contact with skin and eyes.

Section 9: Physical and chemical properties

Information on basic physical and chemical properties

Physical state:

Liquid

Appearance:

Watery viscosity

Color:

Milky White

Odor:

Sweet

Odor threshold:

Not available

pH:

7.5 – 9.0



Safety Data Sheet

Relative evaporation rate (butyl acetate=1):	<1 Slower
Melting point:	Not available
Boiling point:	>212 ° F
Auto-ignition temperature:	Not available
Decomposition temperature:	Not Determined
Flammability (solid, gas):	Not Applicable
Vapor pressure:	>18.62 mm Hg @ 20 ° C
Flash Point:	Not Applicable
Flash Point Method:	Not Applicable
Relative vapor density @ 20 ° C:	
Relative density:	1.05
Density:	lbs / gal
Solubility:	Completely miscible
Log Pow:	Not available
Log Kow:	Not available
Viscosity, kinematic:	Not available
Viscosity, dynamic:	Not available
Explosive properties:	Non-explosive
Oxidizing properties:	None known
Explosive limits:	Not Applicable

Other information:

No further relevant information available

Section 10: Stability and reactivity

Reactivity

Corrosive effects to metal are not anticipated and not fire propagating

Chemical Stability

Product is stable under normal storage conditions

Conditions to Avoid

Avoid extreme heat and freezing conditions

Incompatible Materials

Oxidizing agents (i.e. perchlorates, nitrates etc.), and reactive metals (i.e. sodium, calcium, zinc etc.). Reaction with peroxides may result in violent decomposition with the possibility of creating an explosion.

Hazardous Decomposition Products

(From burning, heating or reaction with other materials): Carbon Monoxide and Carbon Dioxide in a fire. Irritating and toxic fumes are produced at elevated temperatures. Aldehydes are also produced.



Safety Data Sheet

Section 11: Toxicological information

Information on toxicological effects

TOXICITY MEASURES:

Primary routes of exposure:

Routes of entry are ingestion and inhalation, but may include eye or skin contact.

Acute toxicity:

Assessment of acute toxicity: Virtually non-toxic after a single ingestion. Virtually non-toxic after a single skin contact. Virtually non-toxic after inhalation. Ingestion may cause gastrointestinal disturbances.

Chronic toxicity:

No delayed chronic test data are known

Other information:

The product is considered to be harmless to health if used in the correct manner

Section 12: Ecological information

All work practices must be aimed at eliminating environmental contamination.

Toxicity

As far as present knowledge, the product is non-toxic

Persistence and degradability

The product can be virtually eliminated from water by abiotic processes e.g. adsorption onto activated sludge.

Bioaccumulation:

Accumulation in organisms is not to be expected

Mobility

No data available

Other adverse effects

Not determined for this product

Section 13: Disposal considerations

Waste treatment methods

Regional legislation (waste):

Dispose of waste and unused contents in accordance with national and local regulations.



Safety Data Sheet

Waste disposal recommendations:

Ensure the use of properly authorized waste management companies where appropriate or uncertain.

Section 14: Transport information

The product is not covered by the international regulation on the transport of dangerous goods (IMDG, IATA, ADR/RID) and therefore no classification is required.

Section 15: Regulatory information

U.S. Federal Regulations

U.S. OSHA Regulatory Status:

This material is classified as hazardous under OSHA regulations

U.S SARA Reporting Requirements:

The following components of this product are subject to reporting requirements of sections 302, 304 and 313 of Title III of the Superfund Amendments and Reauthorization Act.

CHEMICAL	SECTION 302 EHS (TPQ) (40 CFR 355, Appendix A)	SECTION 304 RQ (40 CFR Table 302.4)	SECTION 313 TRI (40 CFR 372.65)
----------	---	--	------------------------------------

Not considered hazardous

A Section 311/312 (40 CFR 370) Hazard Categories:

ACUTE: No; CHRONIC: Yes; FIRE: No; REACTIVE: No; SUDDEN RELEASE: No

Toxic Substances Control Act (TSCA):

All components of this product are included on the TSCA inventory

U.S. CERCLA Reportable Quantity (RQ):

This product is not listed under CERCLA

U.S. Clean Air Act Threshold Quantity (TQ):

This product is not listed.

U.S. Clean Water Act Requirements:

This product is not listed

California Safe Drinking Water and Toxic Enforcement Act (Proposition 65):

This product contains crystalline silica, quartz and may also contain trace amounts of other chemicals known to the State of California to cause cancer, birth defects or other reproductive harm.

Canadian WHMIS Classification:

.

Canadian Environmental Protection Act (CEPA) Priorities Substances Lists:

European Inventory of Existing Chemicals (EINECS):



ENDURO PRODUCTS

Providing Waterproofing Solutions Since 1983

Safety Data Sheet

All of the components of this product are included on EINECS.

Section 16: Other information

Indication of changes:

Other information:

Full text of H phrases:



NFPA health hazard: 1-May be irritating

NFPA fire hazard: 1-Combustible if heated

NFPA reactivity: 0-Normally stable, even under fire exposure conditions, and not reactive with water

Notice to Reader

The information provided herein is believed to be accurate at the time of preparation or prepared from sources deemed to be reliable, but it is the full responsibility of the user to investigate and comprehend other pertinent sources of information, to comply with all laws and procedures applicable to the safe handling and use of the product and to determine the suitability of the product for its intended use. Enduro Products **makes no warranty, expressed or implied, concerning the product or merchantability or fitness thereof for any purpose or concerning the accuracy of any information provided by Enduro Products**, except that the product shall conform to Enduro Products' specification.



ENDURO PRODUCTS

Providing Waterproofing Solutions Since 1983

Safety Data Sheet

Section 1: Identification of the Product/Company

Product Identifier:

Product Name: EKS Sealer

Product Code:

Relevant identified uses of the substance or mixture

Recommended use:

For professional use in the construction industry

Uses advised against:

None identified

Details of the supplier of the safety data sheet

Manufacturer:

Enduro Products
1133 N. Pratt Street
Anaheim, CA 92801
United States
www.endurokote.com
(714) 526-5898

Telephone (General)

Emergency telephone number

Manufacturer: (714) 526-5898 USA

Section 2: Hazards Identification

Routes of Exposure

Inhalation of vapor or mist

Eye or Skin contact with product vapor or mist

Effects of overexposure

Eyes Irritation

Skin Prolonged or repeated exposure may cause irritation

Inhalation Irritation of upper respiratory tract



Safety Data Sheet

Signs or symptoms of overexposure: Redness and itching or burning sensation may indicate eye or excessive skin exposure

Medial conditions aggravated by exposure: None generally recognized.

Section 3: Composition/information on ingredients

Reportable Components

Name	CAS Number	Wt %	
Calcium Carbonate	1317-65-3	6.32	
Titanium Dioxide	13463-67-7	<27	

Section 4: First aid measures

Description of necessary first aid measures

First-aid measures general:

Remove contaminated clothing

First-aid measures after inhalation:

If affected, remove to fresh air. Assist in breathing if necessary

First-aid measures after skin contact:

Immediately remove contaminated clothing and shoes. Launder clothing before reuse. Seek medical attention if symptoms of irritation or burns occur.

First-aid measures after eye contact:

Flush with copious amount of water for at least 15 minutes. If irritation develops, seek medical attention.

First-aid measures after ingestion:

Do not induce vomiting. Call a physician or poison control center immediately for further instructions. Never give anything by mouth to an unconscious or convulsing person. If person is conscious, rinse out the mouth with water and give plenty of water to drink. Get medical attention immediately.

Most important and effects, both acute and delayed

Symptoms:

None expected due to the non-classification of the product.



Safety Data Sheet

Indication of any immediate medical attention and special treatment needed

Treat symptomatically

Section 5: Firefighting measures

Extinguishing media

Suitable extinguishing media:

Water spray, foam, dry powder

Unsuitable extinguishing media:

None known

Special hazards arising from the substance or mixture

Unusual fire and explosion hazards

Closed containers may explode (due to build-up of pressure) when exposed to extreme heat.

During emergency conditions overexposure to decomposition products may cause health hazard. Symptoms may not be immediately apparent. Obtain medical attention immediately.

Advice for firefighters

Firefighting instructions:

Full protective equipment including self-contained breathing apparatus should be used. Water spray may be ineffective. If water is used fog nozzles are preferred. Water may be used to cool closed containers to prevent pressure build up and possible auto-ignition or explosion when exposed to extreme heat.

Section 6: Accidental release measures

Personal precautions, protective equipment and emergency procedures

General measures:

Wear protective equipment as described under Section 8 and follow the advice of safe handling and use given under Section 7. Emergency procedures are not required.

For non-emergency personnel

Protective equipment:

Wear chemical resistance (impervious) gloves

Emergency procedures:

High risk of slipping due to spillage/leakage of product

For emergency responders

Protective equipment:

Not Applicable



ENDURO PRODUCTS

Providing Waterproofing Solutions Since 1983

Safety Data Sheet

Emergency procedures:

Not Applicable

Environmental precautions

Do not allow to enter drains, sewers or watercourses.

Methods and material for containment and cleaning up

For small amounts: Pick up with suitable absorbent material (e.g. sand, sawdust, etc.). Dispose of absorbed material in accordance with regulations.

For large amounts: Pump off products

Reference to other sections

See Section 7 for information on safe handling

See Section 8 for information on personal protective equipment

See Section 13 for disposal in

Precautions for safe handling

Precautions for safe handling:

Handle in accordance with good industrial hygiene and safety practice. Ensure adequate ventilation.

Hygiene measures:

General occupational hygiene measures are required to ensure safe handling of the product. These measures involve good personal and house-keeping practices. Wash hands after use if contaminated. Avoid wearing contaminated clothing. In dusty environment, wear dust mask, protective goggles and gloves.

Conditions for safe storage, including any incompatibilities

Storage conditions:

Store protected against freezing

Incompatible products:

See section 10

Incompatible materials:

See section 10

Storage area:

The product should be stored in a cool, dry and well-ventilated area, at ambient temperature directly out of the sunlight.



Safety Data Sheet

Section 8: Exposure controls/personal protection

Control parameters

Occupational exposure limits:

No occupational exposure limits known

Exposure controls

Appropriate engineering controls:

Ensure adequate ventilation

Personal protective equipment:

Wear fire-proof clothing, protective goggles and gloves. Wear respiratory protection in a poor ventilated environment.

Hand protection:

Wear chemically resistant protective gloves

Eye protection:

Chemical goggles or safety glasses with side-shields should be worn especially in a splashing environment. Use contact lenses solely is not recommended.

Respiratory protection:

Wear respiratory protection if ventilation is inadequate.

Thermal hazard protection:

Wear suitable protection clothing

Other information:

Hands or face should be washed before breaks and at the end of and shift. Avoid contact with skin and eyes.

Section 9: Physical and chemical properties

Information on basic physical and chemical properties

Physical state:

Liquid

Appearance:

Watery viscosity

Color:

Milky White

Odor:

Sweet

Odor threshold:

Not available

pH:

7.5 – 9.0



Safety Data Sheet

Relative evaporation rate (butyl acetate=1):	<1 Slower
Melting point:	Not available
Boiling point:	>212-350
Auto-ignition temperature:	Not available
Decomposition temperature:	Not Determined
Flammability (solid, gas):	Not Applicable
Vapor pressure:	>18.62 mm Hg @ 20 °C
Coating V.O.C	46.63 Grams/ltr
Specific Gravity	(H2O=1.00):1.36
Vapor Density:	Greater than air
Solubility in Water	Soluble
Evaporation Rate:	Slower than Ether
Appearance and Odor	Liquid, mild odor

Section 10: Stability and reactivity

Stability: Stable

Conditions to Avoid: None Known

Incompatibility: None Known

Hazardous decomposition Products: By fire: carbon dioxide, carbon monoxide

Hazardous Polymerization: will not occur

Section 11: Toxicological information

No Data Available

Section 12: Ecological information

All work practices must be aimed at eliminating environmental contamination.

No Data Available

Section 13: Disposal considerations

Waste treatment methods

Regional legislation (waste):

Dispose of waste and unused contents in accordance with national and local regulations.

Waste disposal recommendations:



Safety Data Sheet

Ensure the use of properly authorized waste management companies where appropriate or uncertain.

Section 14: Transport information

The product is not covered by the international regulation on the transport of dangerous goods (IMDG, IATA, ADR/RID) and therefore no classification is required.

Section 15: Regulatory information

U.S. Federal Regulations

U.S. OSHA Regulatory Status:

This material is not considered under OSHA regulations

U.S SARA Reporting Requirements:

The following components of this product are subject to reporting requirements of sections 311. 312 of Title III of the Superfund Amendments and Reauthorization Act.

--	--	--	--

Not considered hazardous

A Section 311/312 (40 CFR 370) Hazard Categories:

ACUTE: No; CHRONIC: Yes; FIRE: No; REACTIVE: No; SUDDEN RELEASE: No

SARA 313: See Section 3

Toxic Substances Control Act (TSCA):

All components of this product are included on the TSCA inventory

California Safe Drinking Water and Toxic Enforcement Act (Proposition 65):

This product contains trace amounts of other chemicals known to the State of California to cause cancer, birth defects or other reproductive harm.

Section 16: Other information

Indication of changes:

Other information:

Full text of H phrases:



ENDURO PRODUCTS

Providing Waterproofing Solutions Since 1983

Safety Data Sheet



NFPA health hazard: 1-May be irritating

NFPA fire hazard: 1-Combustible if heated

NFPA reactivity: 0-Normally stable, even under fire exposure conditions, and not reactive with water

Notice to Reader

The information provided herein is believed to be accurate at the time of preparation or prepared from sources deemed to be reliable, but it is the full responsibility of the user to investigate and comprehend other pertinent sources of information, to comply with all laws and procedures applicable to the safe handling and use of the product and to determine the suitability of the product for its intended use. Enduro Products **makes no warranty, expressed or implied, concerning the product or merchantability or fitness thereof for any purpose or concerning the accuracy of any information provided by Enduro Products**, except that the product shall conform to Enduro Products' specification.



ENDURO PRODUCTS

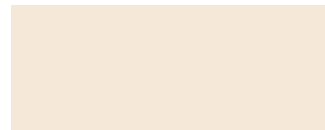
ACRYLIC COLOR SELECTOR



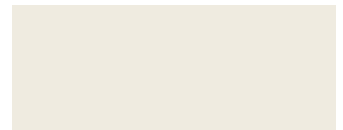
LIGHT BEIGE



CONCRETE GREY



ARIZONA TAN



ANTIQUE WHITE



BEIGE



LIGHT GREY



SILTSTONE



LIMESTONE



SANDY TAN



DARK GREY



SANDSTONE



EUCALYPTUS



ADOBE



PUTTY



BRICK RED

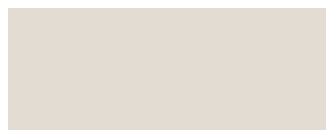


NEWPORT BLUE



ENDURO-DEK

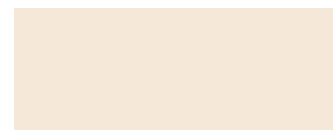
PIGMENTED CEMENTS COLOR SELECTOR



MUSHROOM



SALTILLO



SAUTERNE



PARCHMENT



CINNAMON



LIMESTONE



SAND BEIGE



COPPER BEECH



SLATE GREY

Colors shown may vary. They approximate actual colors as accurately as possible. Custom colors available.

ENDURO PRODUCTS



Corporate Office: 1133 N. Patt Street, Anaheim, California 92801 • Phone: (714) 526-5898 • Fax: (714) 526-6511
Florida Office: 6301 Porter Road, Suite 12, Sarasota, Florida 34240 • (941) 378-9794 • Fax: (941) 378-9438
Toll Free: (877) 809-0781 • Email: info@endurokote.com • Website: www.endurokote.com

REVISED NOVEMBER 2009